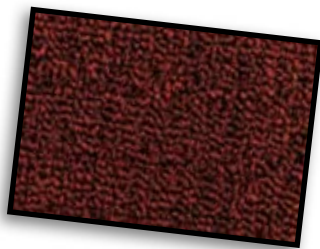


**3M Building and Commercial Services Division**  
**3M™ Nomad™ Carpet Matting 5000**



# Exceptional Performance & Protection



Combining attractive styling with high performance and durability, 3M™ Nomad™ Carpet Matting 5000 protects hard floors and carpets and helps reduce maintenance costs while enhancing safety. The 3M™ Nomad™ Carpet Matting 5000 is designed for light to medium traffic levels. It stops dirt and moisture at the door to help keep your building clean and dry.



## 3M™ Nomad™ Carpet Matting 5000 Series

- For placement inside entrances
- Attractive cross rib dual fiber design that scrapes dirt and removes water
- Slip resistant vinyl backing won't stain the floor and prevents dirt and moisture from falling through mat to the floor
- Heather weave blended designer colors complement almost any décor
- Attractive and affordable protection for your building entrances!

### Product Specifications:

**Traffic Grade:** Light to medium traffic – 50,000 to 100,000 people per year – foot or lightweight wheeled traffic (not large vehicles or heavy machinery)

**Application:** Interior facility entrances

**Material:** Backed, cross rib dual fiber, unique design pattern, polypropylene fibers

**Colors:** Black, Black-Gray, Brown, Gray, Blue, Green, Red

#### Sizes:

**Mats with 4-side 5/8 inch edging:**

3 ft x 5 ft, 3 ft x 10 ft, 4 ft x 6 ft, 4 ft x 10 ft, 6 ft x 10 ft

(0.9 m x 1.5 m, 0.9 m x 3.0 m, 1.2 m x 1.8 m, 1.2 m x 3.0 m, 1.8 m x 3.0 m)

**Custom lengths with 4-side 5/8 in edging:**

Widths: 3 ft, 4 ft or 6 ft

(0.9 m, 1.2 m, 1.8 m)

Lengths: 2 ft to 60 ft in 1-foot increments

(0.6 m to 15.2 m in 0.3 m increments)

**Thickness:** 0.3 in (7.8 mm)

#### Fire Retardancy:

Test method	Value
DOC-FF-1-70	Passes

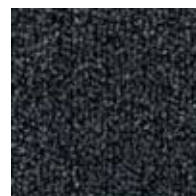
### 3M™ Nomad™ Carpet Matting 5000 Series

Color	Size	Billing UPC No.	Units per Case
Black	3 ft x 5 ft	500-48011-59361-1	1/cs
Black	3 ft x 10 ft	500-48011-59362-8	1/cs
Black	4 ft x 6 ft	500-48011-59363-5	1/cs
Black	4 ft x 10 ft	500-48011-59364-2	1/cs
Black	6 ft x 10 ft	500-48011-59365-9	1/cs
Black-Gray	3 ft x 5 ft	000-48011-59229-9	1/cs
Black-Gray	3 ft x 10 ft	000-48011-59232-9	1/cs
Black-Gray	4 ft x 6 ft	000-48011-59222-0	1/cs
Black-Gray	4 ft x 10 ft	000-48011-59234-3	1/cs
Black-Gray	6 ft x 10 ft	000-48011-59238-1	1/cs

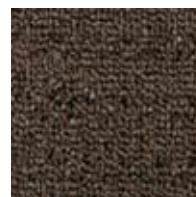
Color	Size	Billing UPC No.	Units per Case
Brown	3 ft x 5 ft	000-48011-59230-5	1/cs
Brown	3 ft x 10 ft	000-48011-59231-2	1/cs
Brown	4 ft x 6 ft	000-48011-59227-5	1/cs
Brown	4 ft x 10 ft	000-48011-59235-0	1/cs
Brown	6 ft x 10 ft	000-48011-59239-8	1/cs
Gray	3 ft x 5 ft	000-48011-59220-6	1/cs
Gray	3 ft x 10 ft	000-48011-59233-6	1/cs
Gray	4 ft x 6 ft	000-48011-59221-3	1/cs
Gray	4 ft x 10 ft	000-48011-59236-7	1/cs
Gray	6 ft x 10 ft	000-48011-59237-4	1/cs



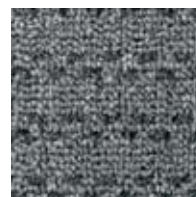
Black



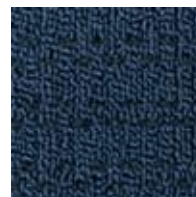
Black-Gray



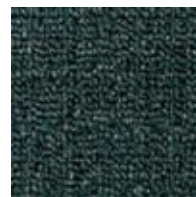
Brown



Gray



Blue



Green



Red



#### Building and Commercial Services Division

3M Center  
St. Paul, MN 55144-1000  
(800) 852-9722  
[www.3M.com/matting](http://www.3M.com/matting)

Please recycle. Printed in USA.  
3M, and Nomad are trademarks of 3M.  
© 3M 2010. All rights reserved.  
78-8134-0335-5 Rev B